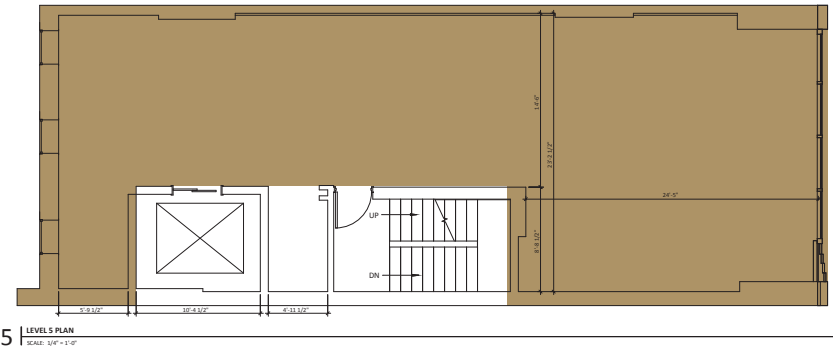
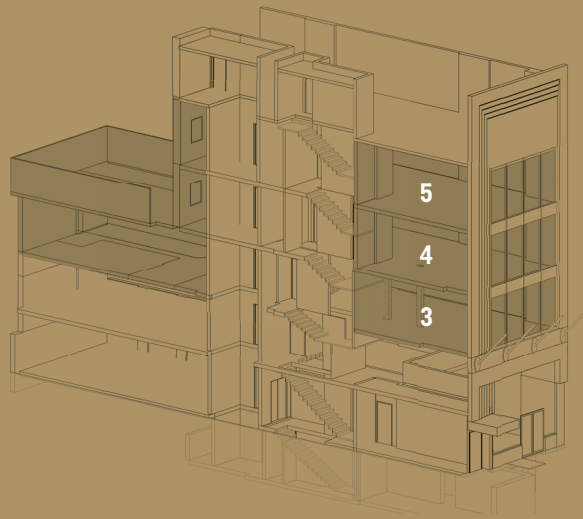


3RD - 5TH FLOORPLANS

CEILING HEIGHTS 13' - 15'

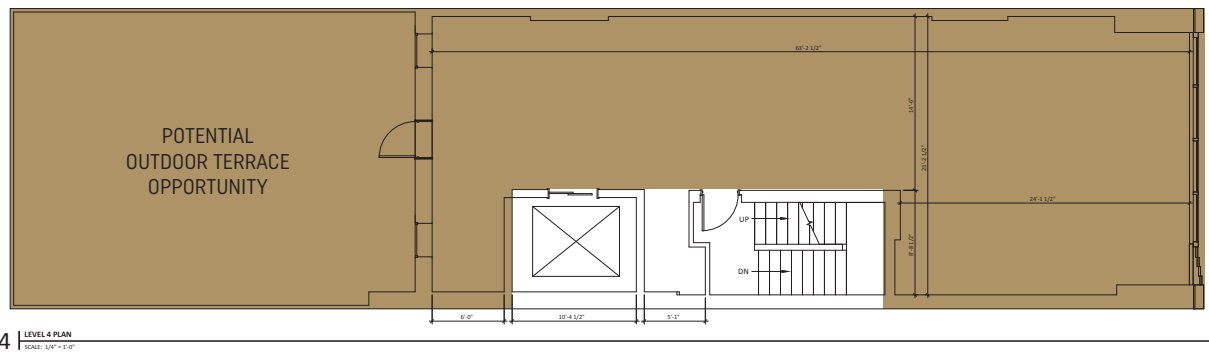
FRONTAGE 25 FT ON W 56TH ST

POSSESSION Q3 2025



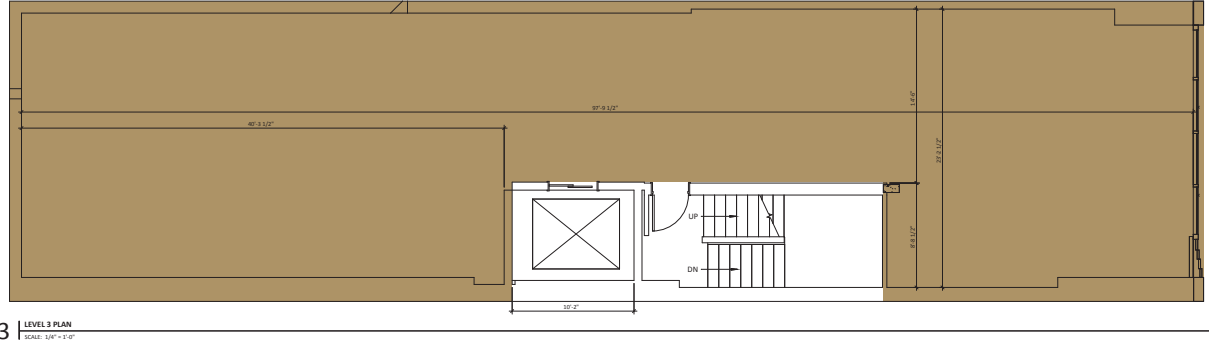
5TH FLOOR 1,978 SF

CEILING HEIGHT
15'



4TH FLOOR 1,970 SF

CEILING HEIGHT
12'



3RD FLOOR 2,789 SF

CEILING HEIGHT
13'